

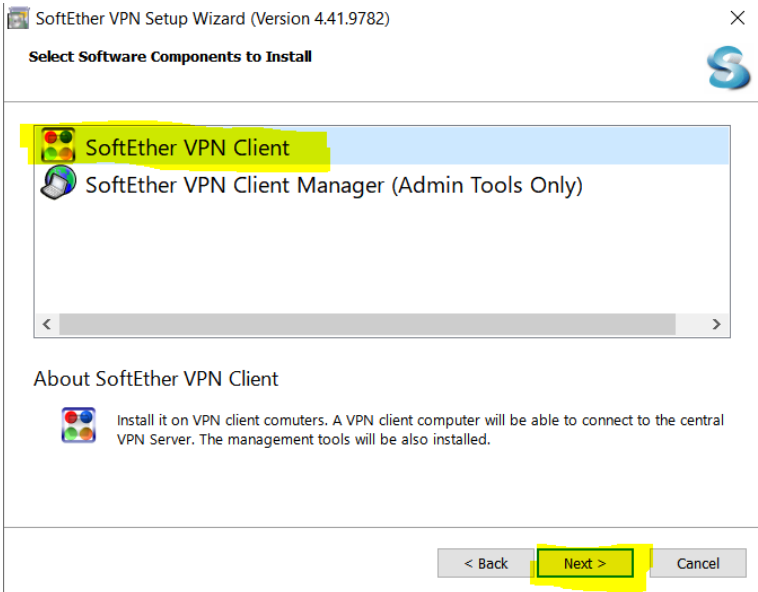
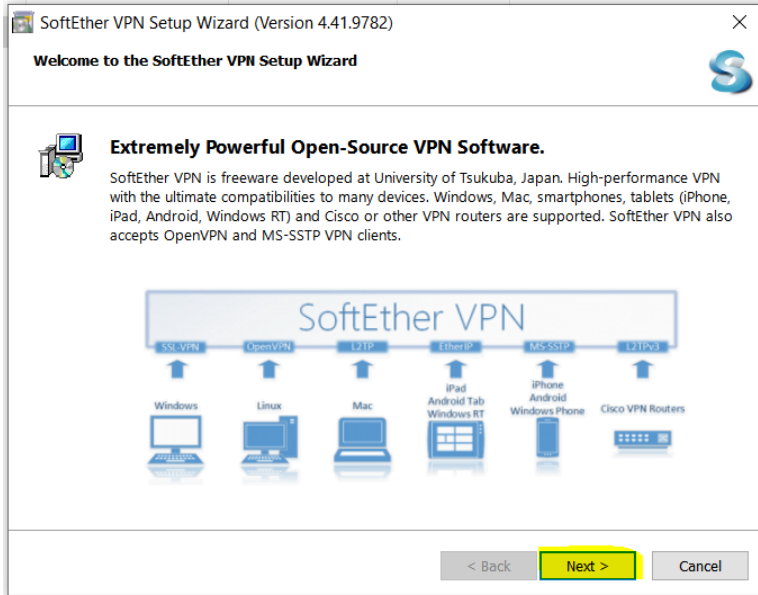
# REMOTE BIMCAP PC USING VPN (ALTERNATIVE TO ANYDESK AND TEAMVIEWER)

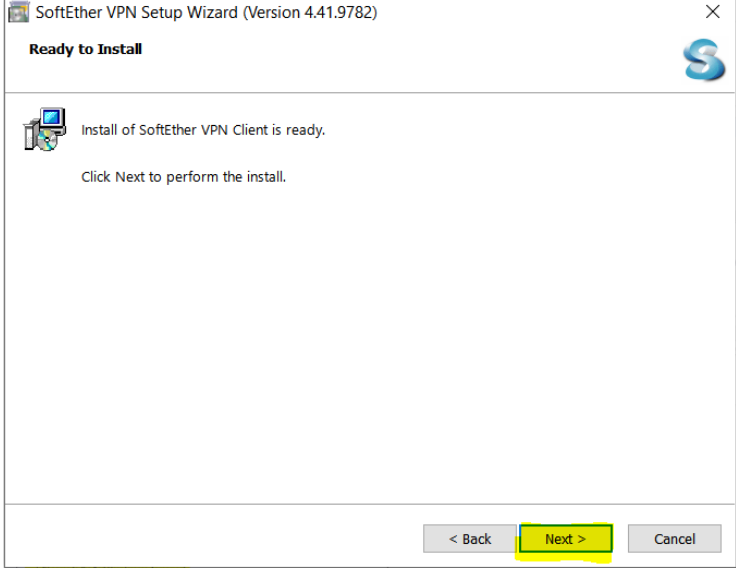
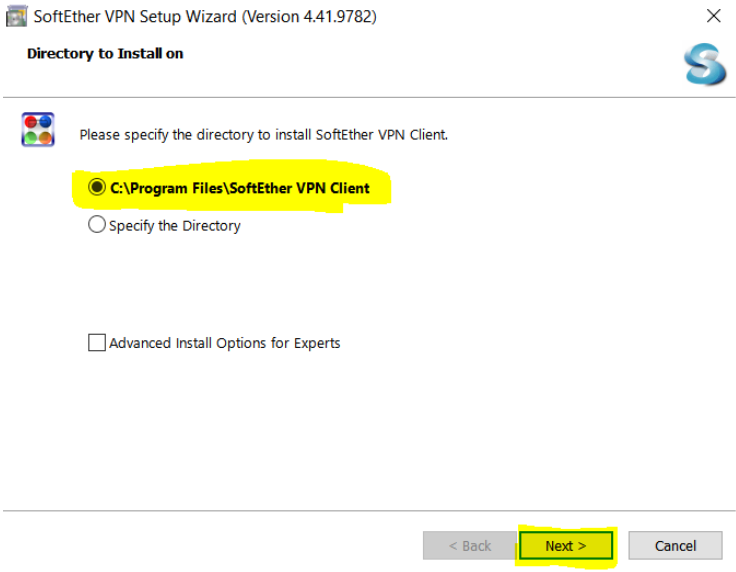
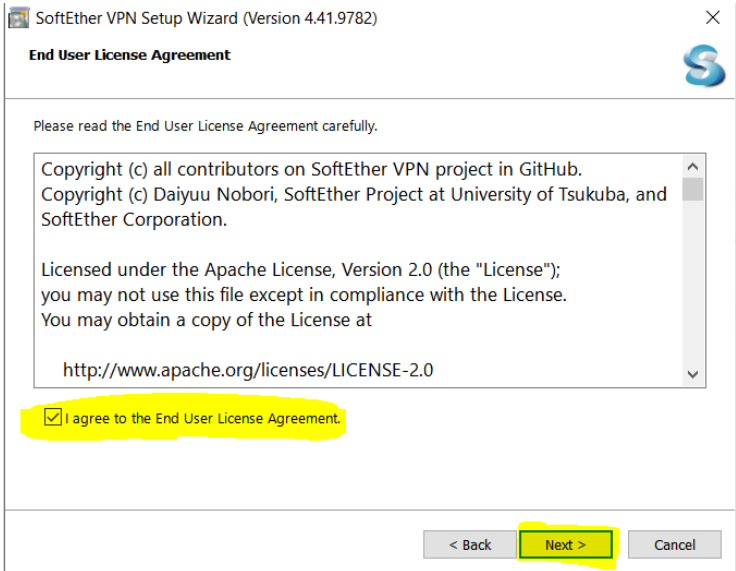
1. DOWNLOAD "SOFTETHER" APPS FROM BIMCAP SHAREPOINT.

Documents > 04\_Resources > 07\_Licenses & Software > 01\_Installers > Softether

Name	Modified	Modified By	+ Add column
softether-vpnclient-v4.41-9782-beta-2022....	February 1	Jay Olayta	

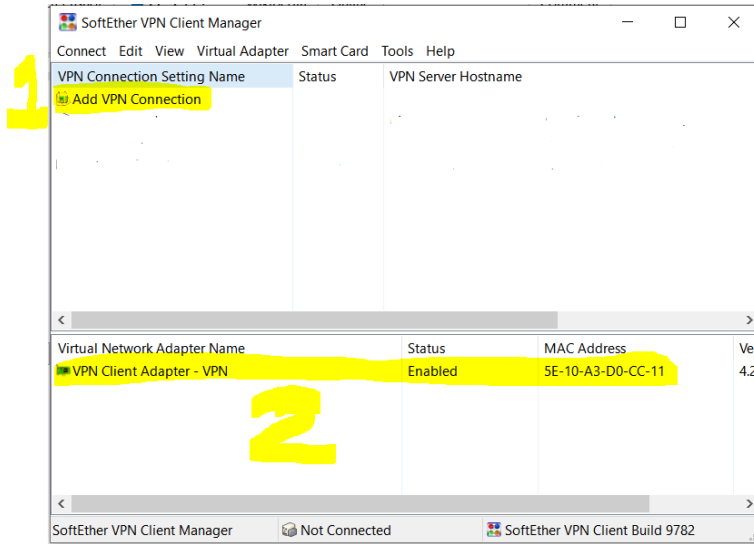
2. INSTALL



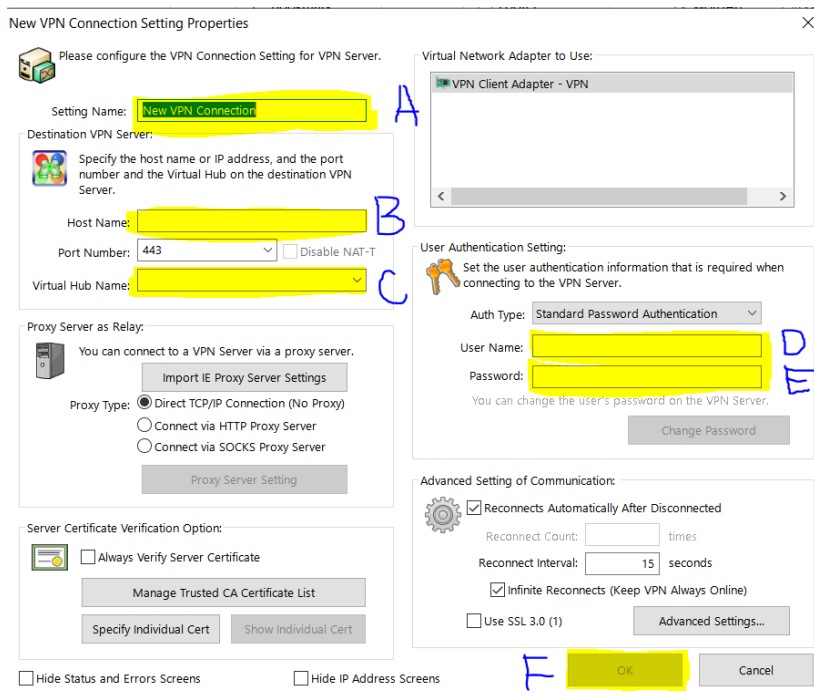


AND CLICK FINISH.

- OPEN THE “SOFTETHER VPN CLIENT MANAGER” AND CLICK “ADD VPN CONNECTION” AND WAIT FOR THE CONNECTION TO CREATE A VIRTUAL NETWORK.

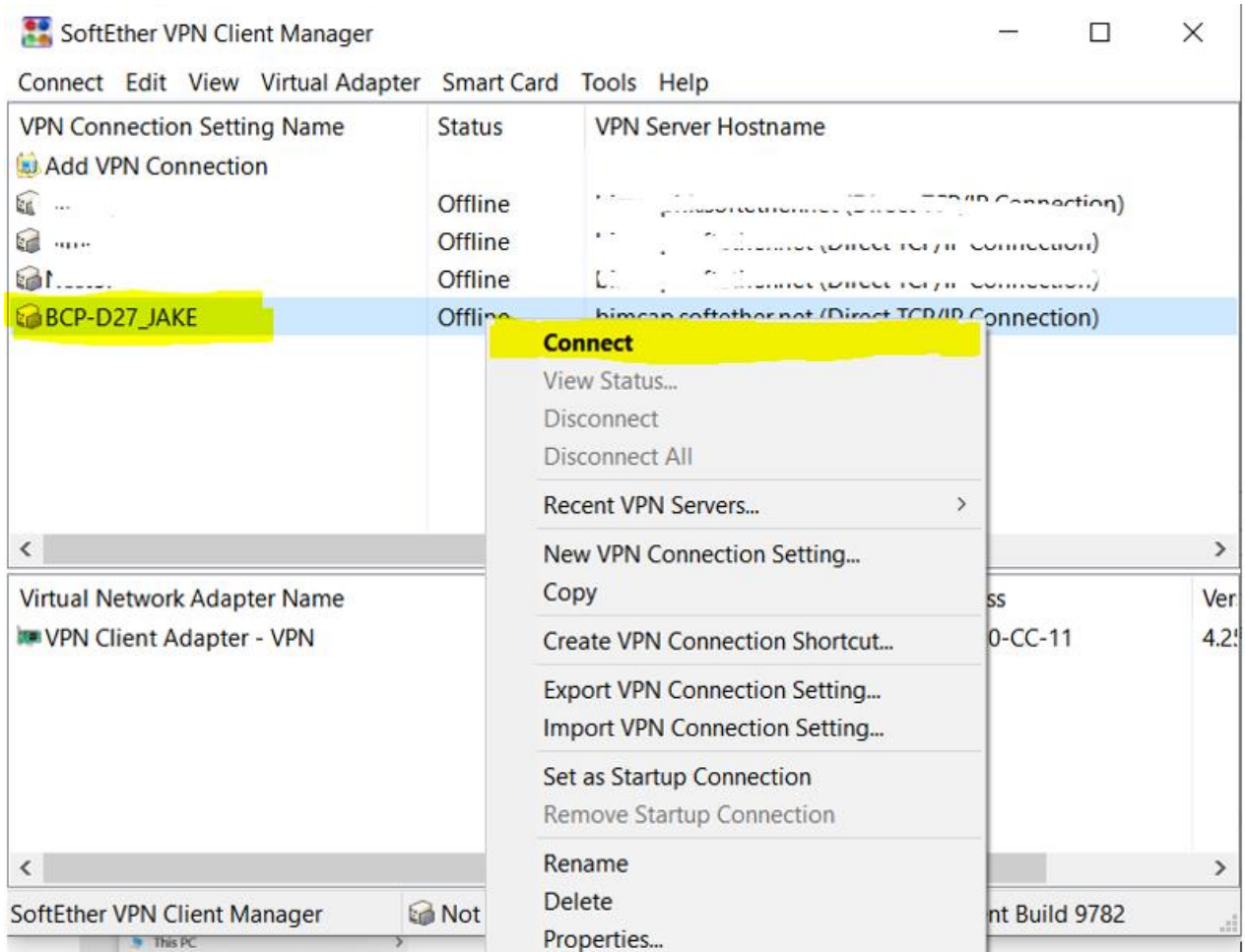


- CLICK “ADD VPN CONNECTION” AND FOLLOW THE INSTRUCTIONS ALPHABETICALLY.

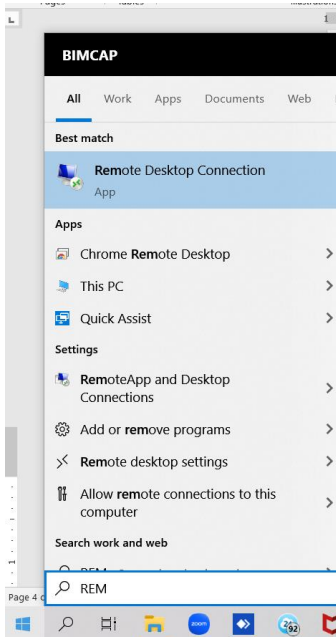


- TYPE “PC NAME”\_”YOUR NAME” (E.G: BCP-D27\_JAY)
- TYPE “bimcap.softether.net” THIS IS FIXED.
- CLICK THE SCROLL DOWN LIST AND WAIT FOR THIS WORD “bimcapVPN” TO AUTOMATICALLY APPEAR.
- TYPE YOUR “FIRST NAME” AS USER.
- TYPRE YOUR PASSWORD IN THIS FORMAT “Bluedragon\_” + FIRST LETTER OF YOUR FIRST AND LAST NAME. (E.G: Bluedragon\_JC) JC stands for “Jake Cuenca”.
- CLICK OK.

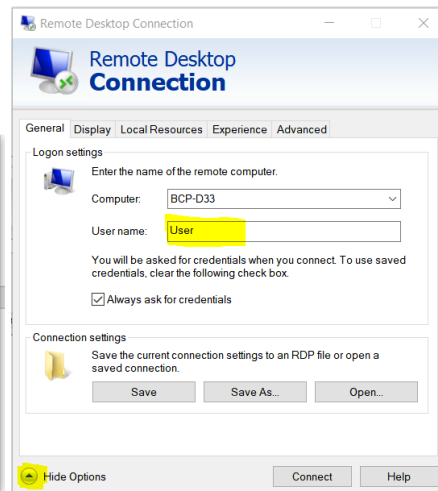
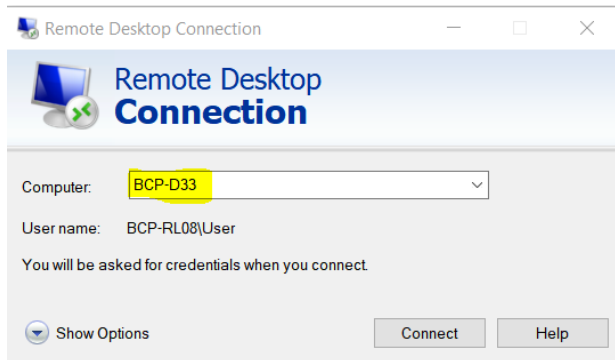
G. OPEN **SOFTETHER** AND **CLICK YOUR NEWLY CREATED PROFILE.**



5. PRESS WINDOWS BUTTON AND OPEN **“REMOTE DESKTOP CONNECTION”**



6. ENTER PC NAME THAT YOU WANT TO REMOTE.



7. ENTER YOUR **“User”** AS USERNAME.

8. ENTER THE **DEFAULT PASSWORD “Bluedragon01”** WHEN ASKED AND YOU’RE GOOD TO GO.

TAKE NOTE IF HAVING ISSUES:

1. CHECK THE DESKTOP IF THE **“REMOTE DESKTOP SETTINGS”** IS ENABLED. IF DISABLED PRESS WINDOWS BUTTON AND TYPE **“REMOTE DESKTOP SETTINGS”** AND CLICK **ENABLE**.
2. CHECK THE SOFTETHER APPS IF THE PROFILE IS SUCESSFULLY **CONNECTED**.
3. RECREATE THE PROFILE AGAIN IN **SOFTETHER**.